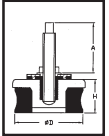
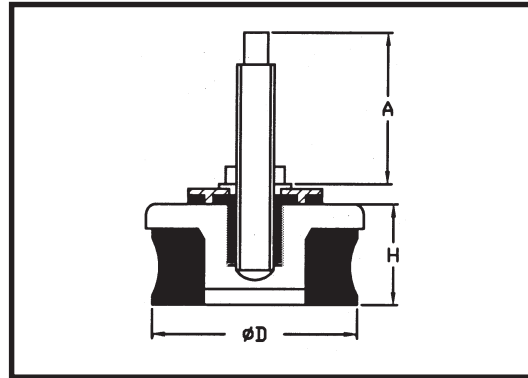


ANTI VIBRATION MOUNTING



MACHINE MOUNTS

THESE ARE MANUFACTURED FROM SYNTHETIC RUBBER HAVING HARDNESS 70 SHORE A. THESE MOUNTS ARE SPECIALLY SUITABLE OR WORKSHOP MACHINERY WHERE NO FOUNDATION OR NO GROUTING IS REQUIRED. THESE ARE READY TO INSTALL MOUNTS ALLOWS IMMEDIATE COMMISSIONING AND WELL PROVIDE EXCELLENT MOBILITY OF THE MACHINES IN THE WORKSHOP. THESE MOUNTS ARE DESIGN FOR THE ABSORBING HIGH FREQUENCY VIBRATIONS, SOUND, PREVENTION OF WANDERING, FIRM POSITIONING, LOWRING THE NOISE LEVEL, ETC.



A = Length of the stud normally 150 mm

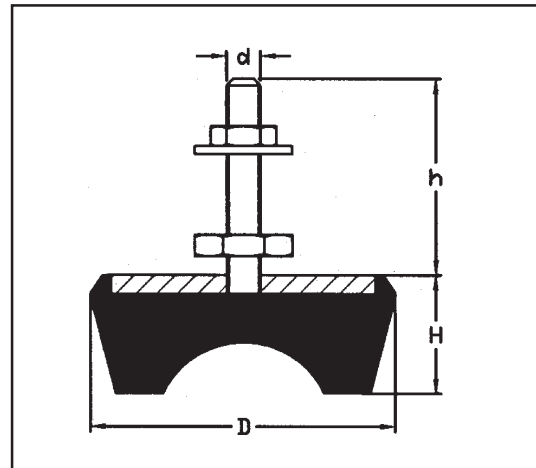
MODEL	D (m/m)	H (m/m)	Thread Size d	Adjustable level mm	Maximum Static Load Kg.	Grinding M/c Rotating Load Kg.	Grinding M/c Reciprocating Load Kg.	M/c Tool Load Kg.	Lathe/Milling M/c Load Kg.	Power Press 200 Strokes/min	Power Press 160 Strokes/min	Power Press > 125 Strokes/min	PRICE Per No.
PMM-1	80	43	M-12/M-16	43-55	600	350	200	400	200	120	140	200	801.00
PMM-2	120	48	M-12/M-16/M-20	48-60	1800	900	450	1100	450	250	300	430	1572.00
PMM-3	160	57	M-12/M-16/M-20	57-70	3000	1500	750	2100	750	700	900	1250	2802.00
PMM-4	200	65	M-16/M-20/M-24	65-77	5000	2500	1300	3500	1300	1200	1500	2200	4542.00

TOP SERIES

THESE ARE MANUFACTURED FROM SYNTHETIC RUBBER AT A HARDNESS OF 65-70 SHORE A, AND DESIGN WITH AN ANTI SLIDING VENT IN THEIR BASE. THESE MOUNTS ARE SUITABLE FOR MACHINERY WITH LOW FREQUENCY VIBRATIONS AND FOR IRREGULAR FLOORS.

MODEL	OPTIMUM WORKING RANG Kg.	D m/m	H m/m	d Thread size	h m/m	PRICE Per No.
TS-1	0-80	48	23	M-8	40	603.00
TS-2	50-120	60	25	M-10	83	753.00
TS-3	80-150	75	30	M-12	90	942.00
TS-4	120-300	90	33	M-12	90	1128.00
TS-5	250-500	115	38	M-16	110	1770.00
TS-6	400-800	125	45	M-16	110	1770.00
TS-7	600-1.100	150	55	M-16	110	3360.00
TS-8	1.000-1.600	170	57	M-16	110	3360.00
TS-9	1.400-2.400	187	70	M-20	115	5052.00
TS-10	2.000-3.500	210	75	M-20	115	5052.00

Shore Hardness A 65

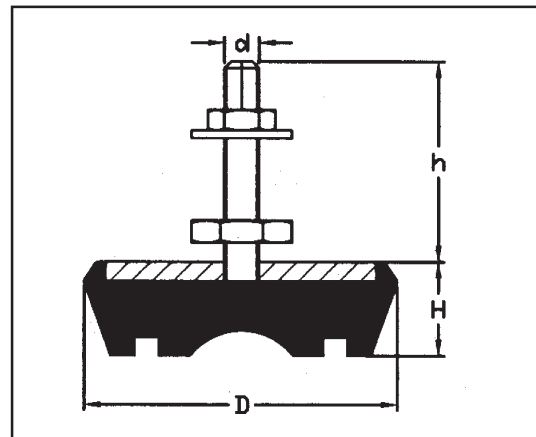


LOW SERIES

THESE ARE MANUFACTURED FROM SYNTHETIC RUBBER AT A HARDNESS OF 65-70 SHORE A, AND DESING OF THE REST ALLOWANCE THE ADHERENCE ON TO THE FLOOR. THESE MODELS ARE SUITABLE TO THE MODERN NEEDS OF MACHINERY WITH POOR VIBRATIONS, MEDIMUM AND HIGH FREQUENCY VIBRATIONS, AND SUITABLE WITH SMOOTH FLOORS.

MODEL	OPTIMUM WORKING RANG Kg.	D m/m	H m/m	d Thread size	h m/m	PRICE Per No.
LS-1	0-60	40	15	M-8	40	603.00
LS-2	30-100	63	18	M-10	83	753.00
LS-3	80-150	70	22	M-12	90	942.00
LS-4	100-350	90	25	M-12	90	1128.00
LS-5	300-600	106	29	M-16	110	1770.00
LS-6	500-900	127	33	M-16	110	1770.00
LS-7	800-1.500	150	39	M-16	110	3360.00
LS-8	1.300-2.000	170	42	M-16	110	3360.00

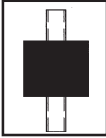
Shore Hardness A 65



Gurudev Says :

The path is very long – the goal is in every moment; the goal is where you are.

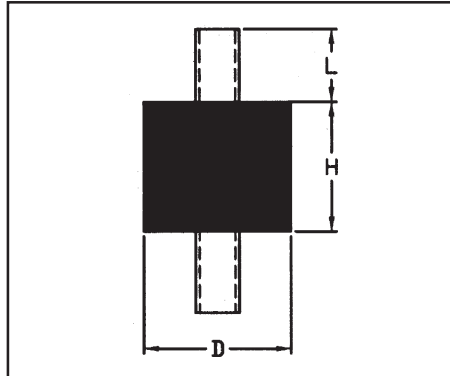
– Sri Sri Ravishankar



ANTI VIBRATION MOUNTING

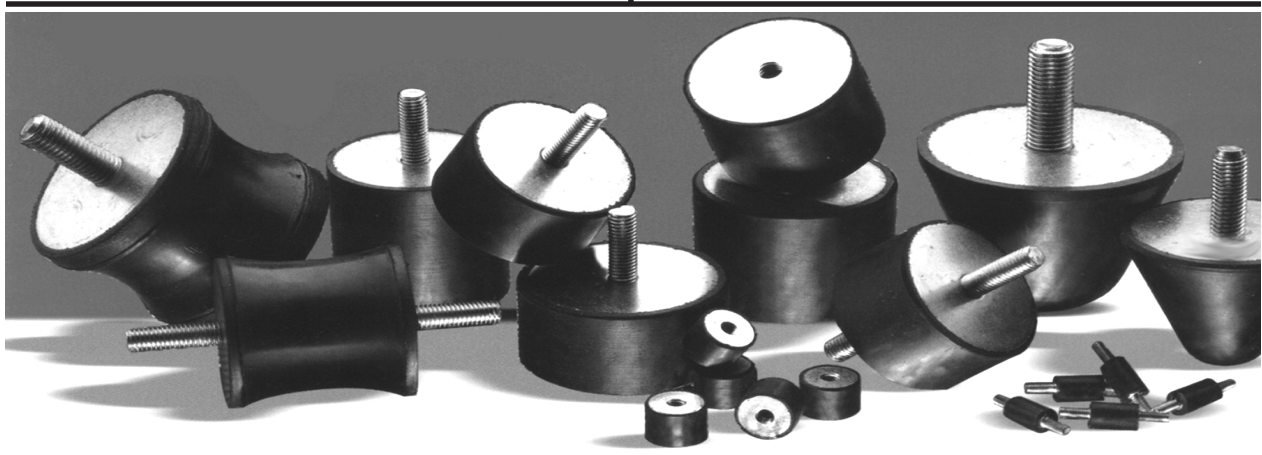
SHAKEPROOF-CYLINDRICAL SHOCK ABSORBERS

THESE ARE MANUFACTURED FROM NATURAL RUBBER AT A HARDNESS OF 55 SHORE A. SUITABLE FOR THE DAMPING OF INTERNAL VIBRATIONS OF MACHINES (ENGINES, HYDRAULIC EQUIPMENTS, PUMPS, GENERATORS, ETC.)THESE ARE DESIGN TO WORK UNDER THE COMPRESSION.



MODEL	D (mm)	H (mm)	Thread Size	L (mm)	Deflection (mm)	Load Kgs	PRICE Per No.	MODEL	D (mm)	H (mm)	Thread Size	L (mm)	Deflection (mm)	Load Kgs	PRICE Per No.
CHAT-1	10	10	M-4	10	2	10	63.00	CHAT-28	40	45	M-8/M-10	25	12	110	252.00
CHAT-2	10	15	M-4	10	3	8	63.00	CHAT-29	50	20	M-10	25	4	250	276.00
CHAT-3	16	8	M-4/M-5	10	1,5	15	63.00	CHAT-30	50	30	M-10	25	8	250	276.00
CHAT-4	16	10	M-4/M-5	10	1,5	20	63.00	CHAT-31	50	35	M-10	25	9	230	276.00
CHAT-5	16	15	M-4/M-5	10	3	20	102.00	CHAT-32	50	40	M-10	25	10	220	285.00
CHAT-6	16	20	M-4/M-5	10	4	20	111.00	CHAT-33	50	45	M-10	25	11	210	285.00
CHAT-7	20	10	M-6	13	2	30	138.00	CHAT-34	50	50	M-10	25	12	200	294.00
CHAT-8	20	15	M-6	13	3	25	138.00	CHAT-35	60	25	M-10	30	5	400	354.00
CHAT-9	20	20	M-6	18	4	25	138.00	CHAT-36	60	35	M-10	30	7	350	354.00
CHAT-10	20	25	M-6	18	5	25	138.00	CHAT-37	60	45	M-10	30	10	300	354.00
CHAT-11	25	10	M-6/M-8	20	2,5	50	147.00	CHAT-38	60	60	M-10	30	12	250	354.00
CHAT-12	25	15	M-6/M-8	20	3	50	147.00	CHAT-39	70	35	M-10	30	7	450	414.00
CHAT-13	25	20	M-6/M-8	20	4	50	147.00	CHAT-40	70	50	M-10	30	10	350	414.00
CHAT-14	25	22	M-6/M-8	20	4	45	147.00	CHAT-41	70	70	M-10	30	13	300	414.00
CHAT-15	25	25	M-6/M-8	20	5	40	150.00	CHAT-42	75	25	M-12	35	5	650	711.00
CHAT-16	25	30	M-6/M-8	20	6	35	150.00	CHAT-43	75	40	M-12	35	9	500	711.00
CHAT-17	30	10	M-8	20	2	90	150.00	CHAT-44	75	45	M-12	35	10	500	711.00
CHAT-18	30	15	M-8	20	3	90	150.00	CHAT-45	75	55	M-12	35	13	450	711.00
CHAT-19	30	20	M-8	20	4	90	168.00	CHAT-46	80	30	M-14	35	5,5	900	759.00
CHAT-20	30	25	M-8	20	5	85	168.00	CHAT-47	80	50	M-14	35	10	750	759.00
CHAT-21	30	30	M-8	20	6	80	168.00	CHAT-48	80	70	M-14	35	15	550	759.00
CHAT-22	30	40	M-8	20	8	60	192.00	CHAT-49	100	40	M-16	45	8	1200	1122.00
CHAT-23	35	35	M-8	20	8	90	192.00	CHAT-50	100	60	M-16	45	15	1100	1122.00
CHAT-24	40	20	M-8/M-10	25	4	160	216.00	CHAT-51	100	75	M-16	45	17	1000	1122.00
CHAT-25	40	25	M-8/M-10	25	6	155	216.00	CHAT-52	150	60	M-16	45	14	2200	1680.00
CHAT-26	40	30	M-8/M-10	25	8	150	216.00	CHAT-53	150	75	M-16	45	16	2200	1680.00
CHAT-27	40	40	M-8/M-10	25	10	120	252.00								

Shore Hardness 55 A



Gurudev Says : You are total, you are full. You have all that you need. Do not underestimate yourself.

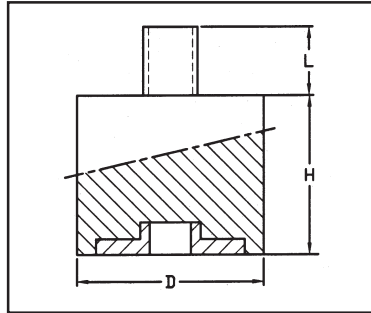
– Sri Sri Ravishankar

ANTI VIBRATION MOUNTING



SHAKEPROOF-CYLINDRICAL SHOCK ABSORBERS

THESE ARE MANUFACTURED FROM NATURAL RUBBER AT A HARDNESS OF 55 SHORE A. SUITABLE FOR THE DAMPING OF INTERNAL VIBRATIONS OF MACHINES (ENGINES, HYDRAULIC EQUIPMENTS, PUMPS, GENERATORS, ETC.) THESE ARE DESIGN TO WORK UNDER THE COMPRESSION.



MODEL	D (mm)	H (mm)	Thread Size	L (mm)	Deflection (mm)	Load Kgs	PRICE Per No.	MODEL	D (mm)	H (mm)	Thread Size	L (mm)	Deflection (mm)	Load Kgs	PRICE Per No.
CHATH-1	10	10	M-4	10	2	10	63.00	CHATH-28	50	20	M-10	25	4	250	276.00
CHATH-2	10	15	M-4	10	3	8	63.00	CHATH-29	50	30	M-10	25	8	250	276.00
CHATH-3	16	8	M-4/M-5	10	1.5	15	63.00	CHATH-30	50	35	M-10	25	9	230	276.00
CHATH-4	16	10	M-4/M-5	10	1.5	20	63.00	CHATH-31	50	40	M-10	25	10	220	285.00
CHATH-5	16	15	M-4/M-5	10	3	20	102.00	CHATH-32	50	45	M-10	25	11	210	285.00
CHATH-6	16	20	M-4/M-5	10	4	20	111.00	CHATH-33	50	50	M-10	25	12	200	294.00
CHATH-7	20	10	M-6	13	2	30	138.00	CHATH-34	60	25	M-10	30	5	400	354.00
CHATH-8	20	15	M-6	13	3	25	138.00	CHATH-35	60	35	M-10	30	7	350	354.00
CHATH-9	20	20	M-6	18	4	25	138.00	CHATH-36	60	45	M-10	30	10	300	354.00
CHATH-10	20	25	M-6	18	5	25	138.00	CHATH-37	60	60	M-10	30	12	250	354.00
CHATH-11	25	10	M-6/M-8	20	2.5	50	147.00	CHATH-38	70	35	M-10	30	7	450	414.00
CHATH-12	25	15	M-6/M-8	20	3	50	147.00	CHATH-39	70	50	M-10	30	10	350	414.00
CHATH-13	25	20	M-6/M-8	20	4	50	147.00	CHATH-40	70	70	M-10	30	13	300	414.00
CHATH-14	25	22	M-6/M-8	20	4	45	147.00	CHATH-41	75	25	M-12	35	5	650	711.00
CHATH-15	25	25	M-6/M-8	20	5	40	150.00	CHATH-42	75	40	M-12	35	9	500	711.00
CHATH-16	25	30	M-6/M-8	20	6	35	150.00	CHATH-43	75	45	M-12	35	10	500	711.00
CHATH-17	30	15	M-8	20	3	90	150.00	CHATH-44	75	55	M-12	35	13	450	711.00
CHATH-18	30	20	M-8	20	4	90	168.00	CHATH-45	80	30	M-14	35	5.5	900	759.00
CHATH-19	30	25	M-8	20	5	85	168.00	CHATH-46	80	50	M-14	35	10	750	759.00
CHATH-20	30	30	M-8	20	6	80	168.00	CHATH-47	80	70	M-14	35	15	550	759.00
CHATH-21	30	40	M-8	20	8	60	192.00	CHATH-48	100	40	M-16	45	8	1200	1122.00
CHATH-22	35	35	M-8	20	8	90	192.00	CHATH-49	100	60	M-16	45	15	1100	1122.00
CHATH-23	40	20	M-8/M-10	25	4	160	216.00	CHATH-50	100	75	M-16	45	17	1000	1122.00
CHATH-24	40	25	M-8/M-10	25	6	155	216.00	CHATH-51	150	60	M-16	45	14	2200	1680.00
CHATH-25	40	30	M-8/M-10	25	8	150	216.00	CHATH-52	150	75	M-16	45	16	2000	1680.00
CHATH-26	40	40	M-8/M-10	25	10	120	252.00								
CHATH-27	40	45	M-8/M-10	25	12	110	252.00								

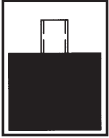
Shore Hardness 55 A



Gurudev Says :

**When you say "Aum" the prana is total, it is complete.
Aum is the nearest sound which can be used to address the totality of consciousness.**

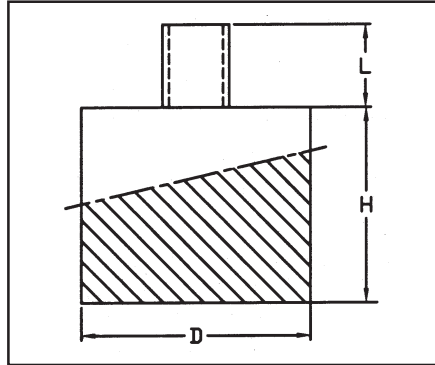
– Sri Sri Ravishankar



ANTI VIBRATION MOUNTING

SHAKEPROOF-CYLINDRICAL SHOCK ABSORBERS

THESE ARE MANUFACTURED FROM NATURAL RUBBER AT A HARDNESS OF 55 SHORE A. SUITABLE FOR THE DAMPING OF INTERNAL VIBRATIONS OF MACHINES (ENGINES, HYDRAULIC EQUIPMENTS, PUMPS, GENERATORS, ETC.) THESE ARE DESIGN TO WORK UNDER THE COMPRESSION.



MODEL	D (m/m)	H (m/m)	Thread Size	L (m/m)	Deflection (mm)	Load Kgs	PRICE Per No.	MODEL	D (mm)	H (mm)	Thread Size	L (mm)	Deflection (mm)	Load Kgs	PRICE Per No.
CHATS-1	10	10	M-4	10	2	10	63.00	CHATS-28	40	45	M-8/M-10	25	12	110	252.00
CHATS-2	10	15	M-4	10	3	8	63.00	CHATS-29	50	20	M-10	25	4	250	276.00
CHATS-3	16	8	M-4/M-5	10	1,5	15	63.00	CHATS-30	50	30	M-10	25	8	250	276.00
CHATS-4	16	10	M-4/M-5	10	1,5	20	63.00	CHATS-31	50	35	M-10	25	9	230	276.00
CHATS-5	16	15	M-4/M-5	10	3	20	102.00	CHATS-32	50	40	M-10	25	10	220	285.00
CHATS-6	16	20	M-4/M-5	10	4	20	111.00	CHATS-33	50	45	M-10	25	11	210	285.00
CHATS-7	20	10	M-6	13	2	30	138.00	CHATS-34	50	50	M-10	25	12	200	294.00
CHATS-8	20	15	M-6	13	3	25	138.00	CHATS-35	60	25	M-10	30	5	400	354.00
CHATS-9	20	20	M-6	18	4	25	138.00	CHATS-36	60	35	M-10	30	7	350	354.00
CHATS-10	20	25	M-6	18	5	25	138.00	CHATS-37	60	45	M-10	30	10	300	354.00
CHATS-11	25	10	M-6/M-8	20	2,5	50	147.00	CHATS-38	60	60	M-10	30	12	250	354.00
CHATS-12	25	15	M-6/M-8	20	3	50	147.00	CHATS-39	70	35	M-10	30	7	450	414.00
CHATS-13	25	20	M-6/M-8	20	4	50	147.00	CHATS-40	70	50	M-10	30	10	350	414.00
CHATS-14	25	22	M-6/M-8	20	4	45	147.00	CHATS-41	70	70	M-10	30	13	300	414.00
CHATS-15	25	25	M-6/M-8	20	5	40	150.00	CHATS-42	75	25	M-12	35	5	650	711.00
CHATS-16	25	30	M-6/M-8	20	6	35	150.00	CHATS-43	75	40	M-12	35	9	500	711.00
CHATS-17	30	10	M-8	20	2	90	150.00	CHATS-44	75	45	M-12	35	10	500	711.00
CHATS-18	30	15	M-8	20	3	90	150.00	CHATS-45	75	55	M-12	35	13	450	711.00
CHATS-19	30	20	M-8	20	4	90	168.00	CHATS-46	80	30	M-14	35	5,5	900	759.00
CHATS-20	30	25	M-8	20	5	85	168.00	CHATS-47	80	50	M-14	35	10	750	759.00
CHATS-21	30	30	M-8	20	6	80	168.00	CHATS-48	80	70	M-14	35	15	550	759.00
CHATS-22	30	40	M-8	20	8	60	192.00	CHATS-49	100	40	M-16	45	8	1200	1122.00
CHATS-23	35	35	M-8	20	8	90	192.00	CHATS-50	100	60	M-16	45	15	1100	1122.00
CHATS-24	40	20	M-8/M-10	25	4	160	216.00	CHATS-51	100	75	M-16	45	17	1000	1122.00
CHATS-25	40	25	M-8/M-10	25	6	155	216.00	CHATS-52	150	60	M-16	45	14	2200	1680.00
CHATS-26	40	30	M-8/M-10	25	8	150	216.00	CHATS-53	150	75	M-16	45	16	2000	1680.00
CHATS-27	40	40	M-8/M-10	25	10	120	252.00								

Shore Hardness 55 A



Gurudev Says :

God is not there just to fulfill your petty demands; God is the very core of your existence.

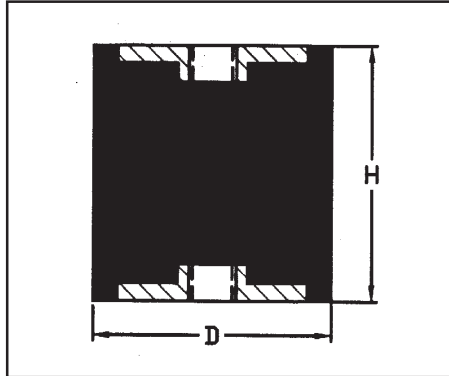
- Sri Sri Ravishankar

ANTI VIBRATION MOUNTING



SHAKEPROOF - CYLINDRICAL SHOCK ABSORBERS

THESE ARE MANUFACTURED FROM NATURAL RUBBER AT A HARDNESS OF 55 SHORE A. SUITABLE FOR THE DAMPING OF INTERNAL VIBRATIONS OF MACHINES (ENGINES, HYDRAULIC EQUIPMENTS, PUMPS, GENERATORS, ETC.) THESE ARE DESIGN TO WORK UNDER THE COMPRESSION.



MODEL	D (mm)	H (mm)	Thread Size	Deflection (mm)	Load Kgs	PRICE Per No.
CHAH-1	10	10	M-4	2	10	63.00
CHAH-2	10	15	M-4	3	8	63.00
CHAH-3	16	15	M-4/M-5	3	20	102.00
CHAH-4	16	20	M-4/M-5	4	20	111.00
CHAH-5	20	15	M-6	3	25	138.00
CHAH-6	20	20	M-6	4	25	138.00
CHAH-7	20	25	M-6/M-8	5	25	138.00
CHAH-8	25	15	M-6/M-8	3	50	147.00
CHAH-9	25	20	M-6/M-8	4	50	147.00
CHAH-10	25	22	M-6/M-8	4	45	147.00
CHAH-11	25	25	M-6/M-8	5	40	150.00
CHAH-12	25	30	M-6/M-8	6	35	150.00
CHAH-13	30	15	M-8	3	90	150.00
CHAH-14	30	20	M-8	4	90	168.00
CHAH-15	30	25	M-8	5	85	168.00
CHAH-16	30	30	M-8	6	80	168.00
CHAH-17	30	40	M-8	8	60	192.00
CHAH-18	35	35	M-8	8	90	192.00
CHAH-19	40	20	M-8/M-10	4	160	216.00
CHAH-20	40	25	M-8/M-10	6	155	216.00
CHAH-21	40	30	M-8/M-10	8	150	216.00
CHAH-22	40	40	M-8/M-10	10	120	252.00
CHAH-23	40	45	M-8/M-10	12	110	252.00
CHAH-24	50	20	M-10	4	250	276.00
CHAH-25	50	30	M-10	8	250	276.00
CHAH-26	50	35	M-10	9	230	276.00
CHAH-27	50	40	M-10	10	220	285.00

MODEL	D (mm)	H (mm)	Thread Size	Deflection (mm)	Load Kgs	PRICE Per No.
CHAH-28	50	45	M-10	11	210	285.00
CHAH-29	50	50	M-10	12	200	294.00
CHAH-30	60	25	M-10	5	400	354.00
CHAH-31	60	35	M-10	7	350	354.00
CHAH-32	60	45	M-10	10	300	354.00
CHAH-33	60	60	M-10	12	250	354.00
CHAH-34	70	35	M-10	7	450	414.00
CHAH-35	70	50	M-10	10	350	414.00
CHAH-36	70	70	M-10	13	300	414.00
CHAH-37	75	25	M-12	5	650	711.00
CHAH-38	75	40	M-12	9	500	711.00
CHAH-39	75	45	M-12	10	500	711.00
CHAH-40	75	55	M-12	13	450	711.00
CHAH-41	80	30	M-14	5,5	900	759.00
CHAH-42	80	50	M-14	10	750	759.00
CHAH-43	80	70	M-14	15	550	759.00
CHAH-44	100	40	M-16	8	1200	1122.00
CHAH-45	100	60	M-16	15	1100	1122.00
CHAH-46	100	75	M-16	17	1000	1122.00
CHAH-47	150	60	M-16	14	2200	1680.00
CHAH-48	150	75	M-16	16	2000	1680.00

Shore Hardness 55 A

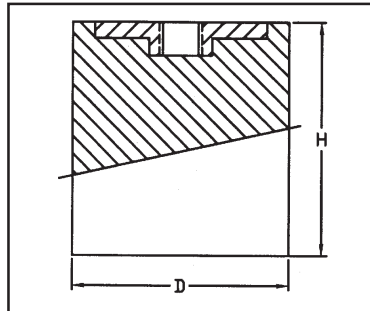




ANTI VIBRATION MOUNTING

SHAKEPROOF-CYLINDRICAL SHOCK ABSORBERS

THESE ARE MANUFACTURED FROM NATURAL RUBBER AT A HARDNESS OF 55 SHORE A. SUITABLE FOR THE DAMPING OF INTERNAL VIBRATIONS OF MACHINES (ENGINES, HYDRAULIC EQUIPMENTS, PUMPS, GENERATORS, ETC.) THESE ARE DESIGN TO WORK UNDER THE COMPRESSION.



MODEL	D (m/m)	H (m/m)	Thread Size	Deflection (m/m)	Load Kgs	PRICE Per No.
CHAHS-1	10	10	M-4	2	10	63.00
CHAHS-2	10	15	M-4	3	8	63.00
CHAHS-3	16	8	M-4/M-5	1,5	15	63.00
CHAHS-4	16	10	M-4/M-5	1,5	20	63.00
CHAHS-5	16	15	M-4/M-5	3	20	102.00
CHAHS-6	16	20	M-4/M-5	4	20	111.00
CHAHS-7	20	10	M-6	2	30	138.00
CHAHS-8	20	15	M-6	3	25	138.00
CHAHS-9	20	20	M-6	4	25	138.00
CHAHS-10	20	25	M-6	5	25	138.00
CHAHS-11	25	10	M-6/M-8	2,5	50	147.00
CHAHS-12	25	15	M-6/M-8	3	50	147.00
CHAHS-13	25	20	M-6/M-8	4	50	147.00
CHAHS-14	25	22	M-6/M-8	4	45	147.00
CHAHS-15	25	25	M-6/M-8	5	40	150.00
CHAHS-16	25	30	M-6/M-8	6	35	150.00
CHAHS-17	30	10	M-8	2	90	150.00
CHAHS-18	30	15	M-8	3	90	150.00
CHAHS-19	30	20	M-8	4	90	168.00
CHAHS-20	30	25	M-8	5	85	168.00
CHAHS-21	30	30	M-8	6	80	168.00
CHAHS-22	30	40	M-8	8	60	192.00
CHAHS-23	35	35	M-8	8	90	192.00
CHAHS-24	40	20	M-8/M-10	4	160	216.00
CHAHS-25	40	25	M-8/M-10	6	155	216.00
CHAHS-26	40	30	M-8/M-10	8	150	216.00
CHAHS-27	40	40	M-8/M-10	10	120	252.00

MODEL	D (mm)	H (mm)	Thread Size	Deflection (mm)	Load Kgs	PRICE Per No.
CHAHS-28	40	45	M-8/M-10	12	110	252.00
CHAHS-29	50	20	M-10	4	250	276.00
CHAHS-30	50	30	M-10	8	250	276.00
CHAHS-31	50	35	M-10	9	230	276.00
CHAHS-32	50	40	M-10	10	220	285.00
CHAHS-33	50	45	M-10	11	210	285.00
CHAHS-34	50	50	M-10	12	200	294.00
CHAHS-35	60	25	M-10	5	400	354.00
CHAHS-36	60	35	M-10	7	350	354.00
CHAHS-37	60	45	M-10	10	300	354.00
CHAHS-38	60	60	M-10	12	250	354.00
CHAHS-39	70	35	M-10	7	450	414.00
CHAHS-40	70	50	M-10	10	350	414.00
CHAHS-41	70	70	M-10	13	300	414.00
CHAHS-42	75	25	M-12	5	650	711.00
CHAHS-43	75	40	M-12	9	500	711.00
CHAHS-44	75	45	M-12	10	500	711.00
CHAHS-45	75	55	M-12	13	450	711.00
CHAHS-46	80	30	M-14	5,5	900	759.00
CHAHS-47	80	50	M-14	10	750	759.00
CHAHS-48	80	70	M-14	15	550	759.00
CHAHS-49	100	40	M-16	8	1200	1122.00
CHAHS-50	100	60	M-16	15	1100	1122.00
CHAHS-51	100	75	M-16	17	1000	1122.00
CHAHS-52	150	60	M-16	14	2200	1680.00
CHAHS-53	150	75	M-16	16	2000	1680.00

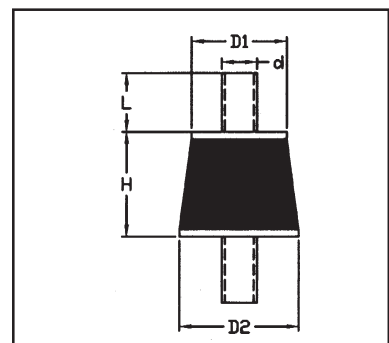
Shore Hardness 55 A

SHAKEPROOF DIABOLO ABSORBERS

THESE ARE MANUFACTURED FROM NATURAL RUBBER AT A HARDNESS OF 55 SHORE A. THESE ARE SUITABLE FOR ALLOWING THE VIBRATION OF MACHINE COMPONENT IN A WAY THAT THIS VIBRATION IS NOT TRANSMITTED OUTWARDS OR IT IS TRANSMITTED THE LEAST POSSIBLE.

MODEL	D1 (m/m)	D2 (m/m)	H (m/m)	Thread Size d	L (m/m)	LOAD Kgs.	PRICE Per No.
DATD-12	30	40	23	M-8	16	30	192.00
DATD-13	40	50	34	M-8	16	60	252.00

Shore Hardness A 55

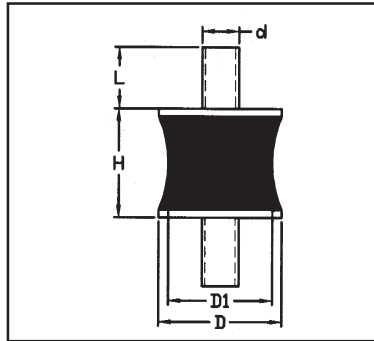


ANTI VIBRATION MOUNTING



SHAKEPROOF DIABOLO ABSORBERS

THESE ARE MANUFACTURED FROM NATURAL RUBBER AT A HARDNESS OF 55 SHORE A. THESE ARE SUITABLE FOR ALLOWING THE VIBRATION OF MACHINE COMPONENT IN A WAY THAT THIS VIBRATION IS NOT TRANSMITTED OUTWARDS OR IT IS TRANSMITTED THE LEAST POSSIBLE.

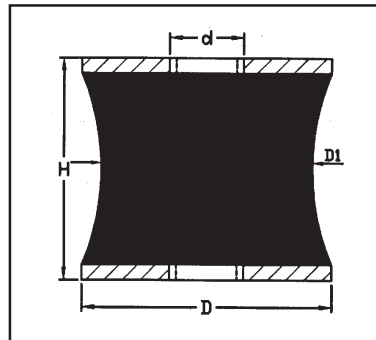


MODEL	D (m/m)	H (m/m)	D1 (m/m)	Thread Size d	L (m/m)	Deflection (m/m)	Load Kgs.	PRICE Per No.
DATD-1	20	20	12	M-6	18	2,5	15	138.00
DATD-2	30	25	24	M-8	20	4	40	168.00
DATD-3	40	28	22	M-10	25	5	60	216.00
DATD-4	60	36	37	M-10	30	5	90	354.00
DATD-5	60	43	35	M-10	30	4	70	354.00
DATD-6	60	60	51	M-10	30	6	150	354.00
DATD-7	70	56	50	M-12	35	6	220	414.00
DATD-8	80	63	70	M-14	35	8	400	759.00
DATD-9	90	77	79	M-16	45	7	500	1122.00
DATD-10	108	85	95	M-16	45	10	800	1122.00
DATD-11	130	96	115	M-16	45	13	1400	1680.00

Shore Hardness A 55

SHAKEPROOF DIABOLO ABSORBERS

THESE ARE MANUFACTURED FROM NATURAL RUBBER AT A HARDNESS OF 55 SHORE A. THESE ARE SUITABLE FOR ALLOWING THE VIBRATION OF MACHINE COMPONENT IN A WAY THAT THIS VIBRATION IS NOT TRANSMITTED OUTWARDS OR IT IS TRANSMITTED THE LEAST POSSIBLE.



MODEL	D (m/m)	H (m/m)	D1 (m/m)	Thread Size d	Deflection (m/m)	Load Kgs.	PRICE Per No.
DATD-14	20	20	12	M-6	2,5	15	138.00
DATD-15	30	25	24	M-8	4	40	168.00
DATD-16	40	28	22	M-10	5	60	216.00
DATD-17	60	36	37	M-10	5	90	354.00
DATD-18	60	43	35	M-10	4	70	354.00
DATD-19	60	60	51	M-10	6	150	354.00
DATD-20	70	56	50	M-12	6	220	414.00
DATD-21	80	65	70	M-12	8	400	759.00
DATD-22	90	50	80	M-12	4	800	1122.00
DATD-23	90	77	79	M-12	7	500	1122.00
DATD-24	108	85	95	M-16	10	800	1122.00
DATD-25	130	96	115	M-16	13	1400	1680.00

Shore Hardness A 55

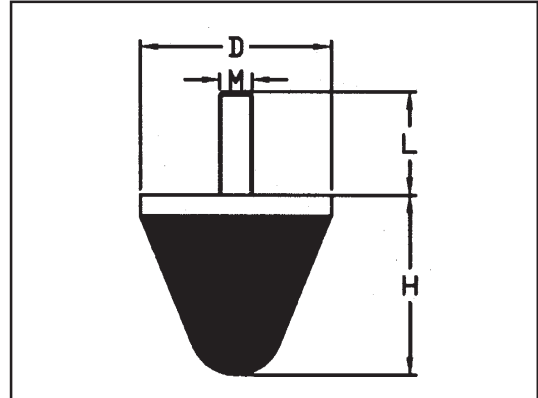


PROGRESSIVE ENDS

THESE ARE MANUFACTURED FROM NATURAL RUBBER AT A HARDNESS OF 65 SHORE A. THESE ARE SUITABLE FOR ALLOWING THE VIBRATION OF MACHINE COMPONENT IN A WAY THAT THIS VIBRATION IS NOT TRANSMITTED OUTWARDS OR IT IS TRANSMITTED THE LEAST POSSIBLE.

MODEL	D m/m	H m/m	Thread size M	L m/m	LOAD Kgs.	PRICE Per No.
PE-1	20	20	M-6	18	70	138.00
PE-2	25	20	M-8	20	100	147.00
PE-3	30	30	M-6	17	150	168.00
PE-4	30	30	M-8	20	150	168.00
PE-5	50	48	M-10	25	380	285.00
PE-6	70	60	M-12	35	550	414.00
PE-7	90	74	M-16	45	1100	759.00

Shore Hardness A 65

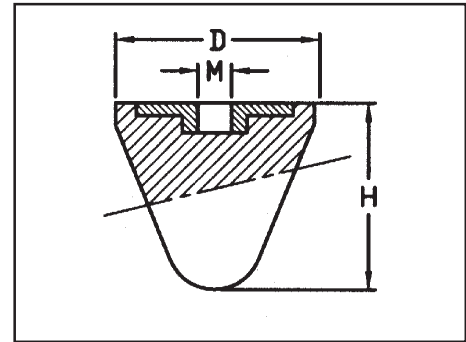


PROGRESSIVE ENDS

THESE ARE MANUFACTURED FROM NATURAL RUBBER AT A HARDNESS OF 65 SHORE A. THESE ARE SUITABLE FOR ALLOWING THE VIBRATION OF MACHINE COMPONENT IN A WAY THAT THIS VIBRATION IS NOT TRANSMITTED OUTWARDS OR IT IS TRANSMITTED THE LEAST POSSIBLE.

MODEL	D (mm)	H (mm)	Thread size M	LOAD Kgs.	PRICE Per No.
PE-8	20	20	M-6	70	138.00
PE-9	25	20	M-8	100	147.00
PE-10	30	30	M-8	150	168.00
PE-11	50	48	M-10	380	285.00
PE-12	70	60	M-12	550	414.00
PE-13	90	74	M-16	1100	759.00

Shore Hardness A 65

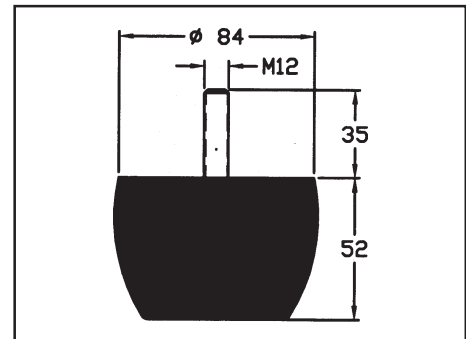


PROGRESSIVE ENDS

THESE ARE MANUFACTURED FROM NATURAL RUBBER AT A HARDNESS OF 65 SHORE A. THESE ARE SUITABLE FOR ALLOWING THE VIBRATION OF MACHINE COMPONENT IN A WAY THAT THIS VIBRATION IS NOT TRANSMITTED OUTWARDS OR IT IS TRANSMITTED THE LEAST POSSIBLE.

MODEL	LOAD Kgs.	PRICE Per No.
PE-14	1500	1680.00
PE-15	1500	1680.00

Shore Hardness A 65



Gurudev Says :

When you accept the variety of the Divine, you cease to be a fanatic or a fundamentalist.

– Sri Sri Ravishankar